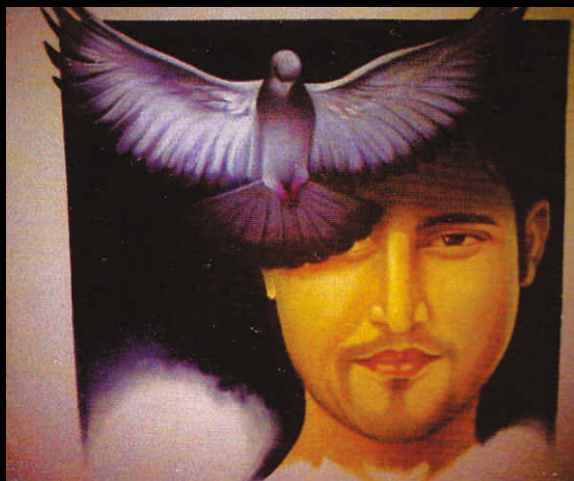
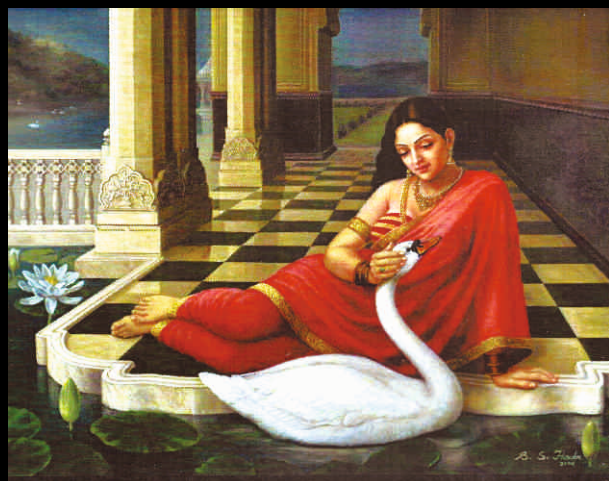
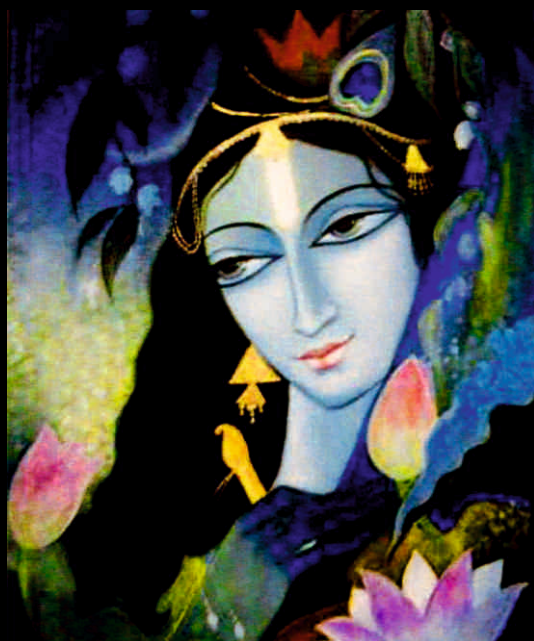
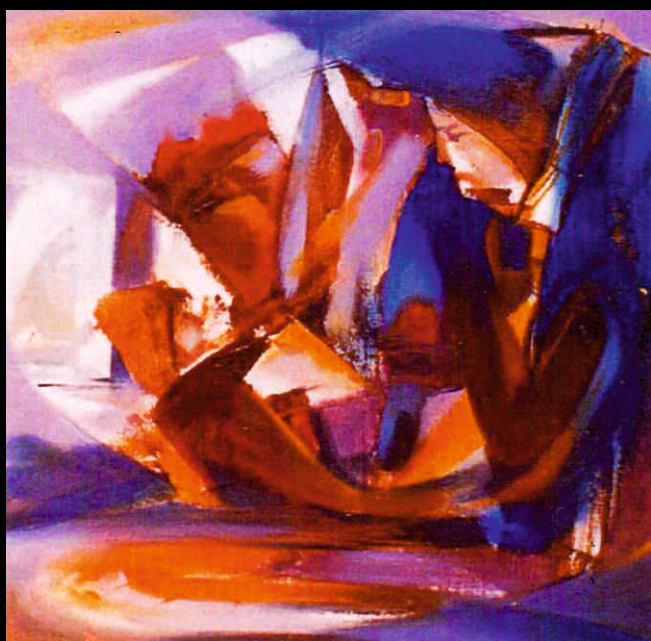


ART NEWS



Monthly News Letter// All India Fine Arts and Crafts society, New Delhi // May, June, July 2015



Spiritual Thought

An exhibition of paintings by Sachee Kant Jha was held in the gallery of Lalit Kala Akademi, New Delhi from 1 to 7 May 2015.

He has done his Post-graduation from Indira Kala Sangeet University, Khairagarh. This is his third solo show exploring spiritual thoughts through his religion.

He is one of them who has used Shiva symbolically to relate with the present day scenario of human psyche. His human figures are in the religious attire. Tilak with three horizontal lines covering the full forehead may signify some sect but his symbolic use generalized a true religion of humanity. Bald headed male figures with tilak and rudraksh mala are well composed in the space created in the canvas area. In some works there is strong social comment. His compositions create many planes and dimensions. Application of colours is heading

towards maturity. Most of the canvases are dark and are treated with black and red colours. This combination of colours with the religious symbols create mystic atmosphere on canvas.

'Atmagyan' is a painting with man in his religious attire with a band of cloth covering his mouth comes towards the viewer to convey his achievements and realizations. Figures standing behind are left yet to realize.

'Poorna Parivar' is expressed by the artist as the female figure with some gesture and waiting for acceptance. The relationship has been created without any dialogue. Dark faces again created some atmosphere reservations.

On the contrary his 'Premtyag' is a painting with man holding his belongings leaving behind his people. The detachment is clearly visible. Similarly his other paintings like 'Naari Shakti', 'Akshat (Shiv Shakti aur Bhakti)', 'Bairag, Grihasth and Rajasva', 'Grih Lakshmi' are very familiar Indian social subjects. The relation between religion and social binding is explored well.



Seven artists showcased paintings

An exhibition of paintings by seven artists was held in the gallery of Lalit Kala Akademi, Rabindra Bhavan, New Delhi.

Ashish Chatterjee did his Post Diploma in Painting from Indian Society of Oriental Art, Kolkata. He has been exploring the relation of human being with animals which human beings are taming from ages. A child feeding lily to goat is the affection shown by the gesture. the Canvas space is leading to the centre point of the subject matter.

Barsha Bagchi held three solo shows and a number of group shows in Kolkata. Her themes of paintings take to the past memories. The experiences of the past give good experiences as well as some sad and bitter experiences. These moments are expressed in the painting titled 'Nostalgia'. The dreamy eyes are traveling in the past memories. Flying letters making a nostalgic moment.

Ranjan Kumar did his post graduation from Banaras Hindu University, Varanasi and is Assist. Professor in Art Education in SMP Government Girls P. G. College Meerut U.P.

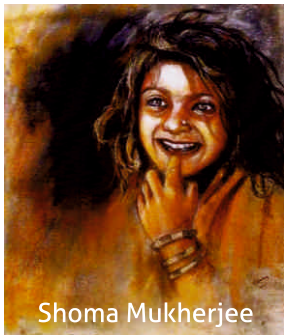
As most of the artists from BHU painted ghats of Varanasi. There is identity of the elements established the situation. Ranjan has taken the feeling of the atmosphere of the environment and painted the city's inner energy.

Shoma Mukherjee has done her B. Sc from University of Mumbai and Textile designing from Rachna Sansad, Mumbai. She has shown her expression through portraits. It has made her a keen observer to capture the moods and feelings of human beings. portraits in dry pastel are handled to make the correct tones and tints in modeling the desired effects.

Subhankar Biswas has done his Graduation and Post-Graduation from Government College of Art & Craft, Kolkata. His tempera works show the excellence as a student of Indian wash painting. The subject matter is changed. An old man taking a bicycle though not riding, may be his age does not allow to ride.

Sumitra Sen did life Study course from Indian Society of Oriental Art. Diploma in textile designing. She has some reflection of her training of dress designing in her paintings. The abstraction of her paintings show some human action. The division of spaces for her elements are well balanced.

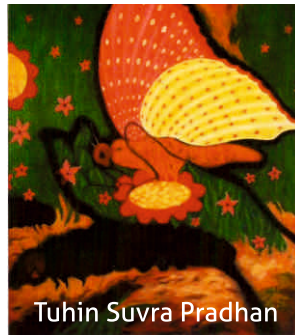
Tuhin Suvra Pradhan did his graduation from Government College of Art & Craft, Kolkata. Nature has fascinated him to create the essence to depict his feelings. The elements of nature like flowers and leaves associated with butterflies make his compositions environment friendly. The contact with nature is his main concern.



Shoma Mukherjee



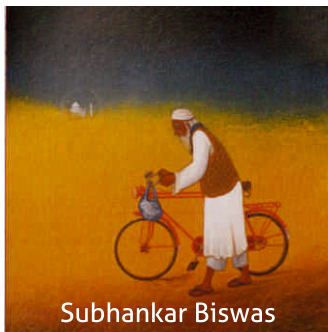
Barsha Bagchi



Tuhin Suvra Pradhan



Ranjan Kumar



Subhankar Biswas



Ashish Chatterjee



Sumitra Sen

Musing in Pen and Ink

A solo exhibition of paintings in pen and ink by Saurav Nandy was held from 25 to 31 May 2015 in the galleries of Lalit Kala Akademy, Rabindra Bhavan, New Delhi.

Saurav has done his Diploma in painting from Birla Academy of Art and Culture, Kolkata. He held three solo shows and participated in a number of group shows.

He started scribbling with pen and ink from his early age. Later, he enticed by the idea of infusing colours into these spaces to enhance the expression. Works in the exhibition were eventual outcome of this stylistic evolution. Drawing is one of the oldest forms of human expression before the invention of the written language. It is seen in the cave and rock paintings created by human beings in early period of human civilizations. These drawings were known as pictograms, depicted objects and abstract concepts. These sketches and paintings produced in prehistoric period were simplified and resulted to the written language.

Drawings are used to express one's creativity. It has its own important place in the world art. It is the foundation of self expression in the world of visual art. Drawings are commonly used as tool of study medium, artists were preparing for their final work of art.

Various drawing mediums are used to make drawings like graphite pencils, pen and ink, crayon, charcoal etc. Saurav has selected pen and ink for his expressions and later on added colour in it.

His works have influences of the surroundings and happenings of the present days. 'Throne' is the work and a series which is the depiction of position and power. It may lead to the political satire. 'Homage IV' is the depiction of a mythological representation of Krishna and Gopis. The cow is the main image in the painting with some amusing expression. Some abstract works 'untitled' are creating movement in the compositions. The lines to create tone and textures give some dimension in his works.

'Homage IV (Black Mischief)' Pen and Ink on paper 21.5 X 29.5 inches



Vibrations

A group exhibition of paintings and photographs was held in the gallery of All India Fine Arts & Crafts Society from 6 to 12 may 2015.

Bhim Singh Hada is a highly skilled self taught painter from Jaipur. he is also known for his paintings of the fortresses of Rajasthan. Lady with a swan sitting near the pond is excellently executed in an architectural surrounding.

Sunil Malhotra is a photo journalist with many awards to his credit. Won awards from all over the world including from AIFACS. Series of his Holi festival are well appreciated all over.

Rajiv Gupta is a photo journalist with major media institutions of India. He covered many critical events of the world. Here he tried to see objects in a different way.

Naval Kishore showed his paintings with female figures. With realistic approach he broke the heads into cubic forms. friendly relationship makes the composition in a compact format.

Anil Kumar Kohli, a Delhi based artist has been working in various mediums. He has been working on symbolic themes with lotus like

flower in the centre of his composition.

Kamal Nath has been experimenting with relationship. His figures are in deep meditative mood. A small bird is communicating with full affection.

Monica Wadhwa's composition has some organic shapes coming up with an upward movement. Her works are inspired by nature.

Dr. Nupur Sharma has evolved effective thoughts with minimum work and strong flat colours.

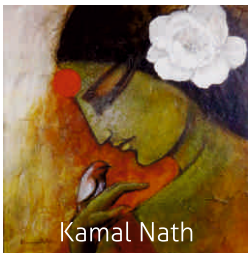
Female figure with visible minimum profile creates some mystery in the concept.

Dr. Prince Raj presented his paintings with different concepts. An old man in the attire of a sadhu with painted tri-colour national flag on his forehead depicts some loyal gesture.

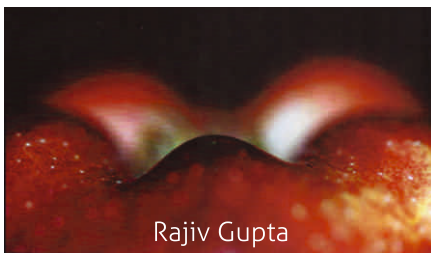
Zulfiqar Ali has painted some fascinated seascapes. It relates to different moods of the atmosphere created with waves.

Sheetal Singh Gulati painted highly decorated interiors of some royal touch to the articles placed there. Treatment of the application of colours create effective results.

Sadaf Beg Khan observed all the colours in a landscape. Instead of mixing it to a realistic landscape, she has separated the colours. Strokes of spatula created controlled action and spaces.



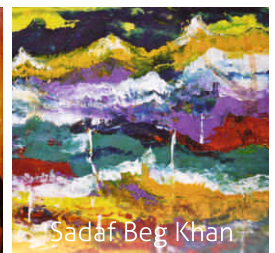
Kamal Nath



Rajiv Gupta



Naval Kishore



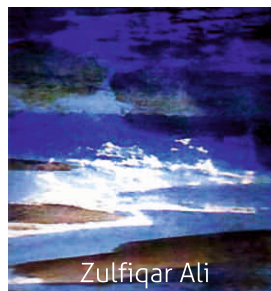
Sadaf Beg Khan



Dr. Nupur Sharma



Sheetal Singh Gulati



Zulfiqar Ali



Bhim Singh Hada



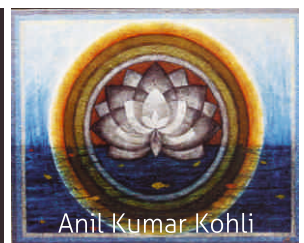
Monica Wadhwa



Sunil Malhotra



Dr. Prince Raj



Anil Kumar Kohli

Mesmerising Nature

Manisha Saha exhibited her paintings in the gallery of Lalit Kala Akademi, New Delhi from 17 to 23 May 2015.

She graduated from Government College of Art & Craft, Kolkata. at present teaching in a Government sponsored school in Kolkata.

She was born in Kolkata with the surroundings of a metro city but nature has always fascinated her. The rural and remote areas with paddy fields inspired her to paint these landscapes. This is expressed in her 24 canvases in oil. Besides these canvases she exhibited 23 water colours and sketches.

In these canvases man made changes in the form of paddy fields and its linear divisions create unlimited patterns. The untouched nature which grows spontaneously and create balance and rhythm in its natural form. By the effort of man nature has been turned into beautiful and impressive canvases. In nature all the colours of paddy fields like yellows when corn is ripe and some patches of green and brown balance every composition.

All her canvases make a complete process of the natural sequence of bare land with brown soil to the harvesting time. The process of changing colours create different patterns which are repeated with the change of seasons. Different patterns are made in the terrace paddy fields on mountains. Patterns are more rhythmic and at different levels. The best views is from a higher level called 'bird's eye view'.

Manisha expresses, "In the opposing pull of realism and surrealism, space in nature hovers in and out of man's control or dominance. Man uses parts of the land to grow his food, with the increase in population, the pattern of agrarian land is also changing. I, with my limited means, have tried to convey all these through my works."

"In addition to this changing pattern of land at man's hands, the nature painted in my water colours bring balm of solace in the stressful spell of nature on one's mind, the bright colours of the flowers and the black white charcoal scenes of hills beckon you to the 'Mesmerizing Nature' even when you are far away from it, closed in the walls of your city home. ..."

Her application of colours shows some maturity.



Tanmay Banerjee

A solo show of sculptures and drawings by Tanmay Banerjee was held in the galleries of Lalit Kala Akademi, New Delhi from 25 to 31 May, 2015.

He has graduated from Kala Bhavan, Vishwa Bharti University, Santiniketan.

His Metal sculptures show the excellence in creating his bulls and other animals. He is an animal lover. These animals have been living with human being since ages. Besides bulls he has sculpted goat, cat, dog and pelican. After seeing his bulls one can very easily travel to the cave paintings of Altamira. The Cave of Altamira and lascaux and in Spain and France, famous for its Upper Paleolithic cave paintings featuring drawings and rock paintings of wild mammals and human hands. Huge bulged body of the bulls may symbolize the strength and energy these animals possessed. Human being has this age old relation and tamed them for own purpose. It may be his affection or the form of a bull he liked as many artists of the world painted and sculpted them. He could bring out the elegance and grace of the body in bronze.

Tanmay has also made few similar theme. It has same energy as in his sculptures.

drawings on the strength and



Tanmay has understood the essentials of drawings. As a sculptor he knows the basics of the self expression. It is an intimate expression of artist's inner personality. His drawings depict the rural life of primitive times. The man has domesticated the animals which are part of his drawings. These are the subjects of the modern time where human and animal relation and interdependence is reflected. Man sitting with birds in cage and with balloons are common scenes in our small towns. Adam and eve like figures create different atmosphere in the composition.

Conte strokes are linear as well as rubbing and smudging create tones and textures help the image to come out of the subject.



Bengal Art Foundation

Presented an exhibition of paintings and sculptures by working Bengali painters in the gallery of Lalit Kala Akademi from 17 to 23 May 2015. The objective of the Foundation is to represent the flavour of Bengal through their works of art.

Suktisubhra Pradhan represented her symbolic painting with some spiritual touch with eternal flame. Pallab Kanti Mitra has taken his figures towards abstraction. Application is done with freedom. Asit Kumar Sarkar romanticized his composition. The relation of male and female figure with close contact is effectively presented. Swati S worked in Indian style of painting with modern touch. Krishna is her theme with many other elements. Prosanta Kumar Basu is a self taught painter with many phases of learning. His abstract landscape is one of them. Arpita Biswas has lived and painted landscapes in the surroundings she observed. Her realistic landscape tells the story of the land. Kripasindhu Bhattacharjee's abstract forms with definite strokes portray emotional feelings one can experience in the used space. Kashinath Bose works in many mediums and concepts. His mythological composition in Indian painting style shows the moods of the flute playing Ganesha. Debashish Ghosh is a painter of abstract themes. Geometric shapes float in the space. Windows

and ladders are incorporated. Chandrima Guha Roy yet another abstract painter in the group. Horizontal line force gives the feeling of a landscape. Anirban Guha is fascinated with the faces of people. Portrait is his subject matter. Paints portraits of different personalities also. Arindam Das Painted abstract compositions with superimposing different shapes with some linear faces in different moods. Sandipan Bhattacharjee paints the city life. His cycle rickshaw is an emotional work tells the story of the labour one does for living. Chandra Shekar Das is a sculptor and exhibited terra cotta figure sitting in a desperate mood. Tapan Pramanik is a self taught painter with surrealistic approach to his subject. Some abstraction is part of his composition. Santanu Dasgupta is an animal lover. He painted domestic cats inter woven with a thread may be a play for them. Subimalendu Bikas Sinha has simplified his compositions with linear drawing. Ashoke Roy's cow and Krishna with Radha in an affectionate manner makes the composition meaningful.



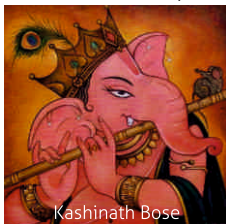
Tapan Pramanik



Kripasindhu Bhattacharjee



Debashish Ghosh



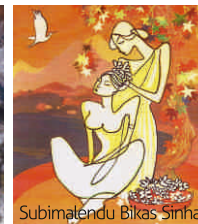
Kashinath Bose



Anirban Guha



Prosanta Kumar Basu



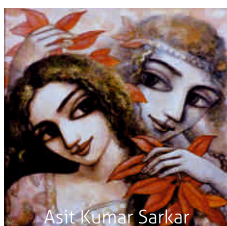
Subimalendu Bikas Sinha



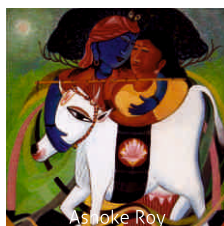
Sandipan Bhattacharjee



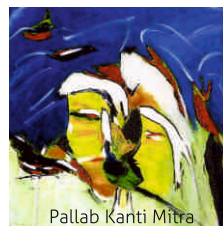
Suktisubhra Pradhan



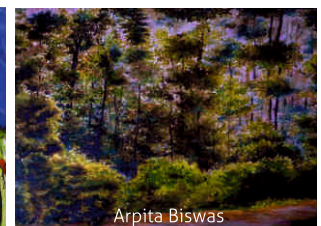
Asit Kumar Sarkar



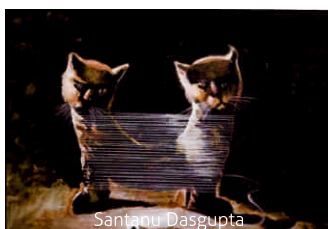
Ashoke Roy



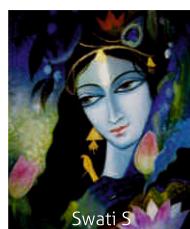
Pallab Kanti Mitra



Arpita Biswas



Santanu Dasgupta



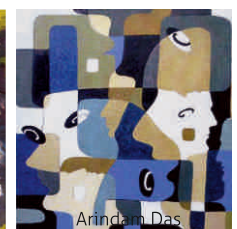
Swati S



Chandra Shekar Das



Chandrima Guha Roy



Arindam Das

Patterns

A solo show of paintings by Dr. Sanjeeda Khanam was held in the gallery of Triveni Kala Sangam from 9 to 19 July 2015.

Sanjeeda has done her masters and Ph D from M G Kashi Vidyapeeth, Varanasi. This was her fourth solo show and participated in more than twenty two group shows all over the country.

Her paintings are abstract thoughts influenced by the nature and environment.

Abstract art is also termed as nonfigurative art or nonrepresentational art. In general abstract art is often seen as carrying some moral dimension. It is considered as symbolizing order, simplicity, and spirituality. It is also applied to art based on figures, objects, landscapes where simplification creates an abstract version of the subject. Forms such as geometrical shapes or other symbolic marks may also create abstract version. It is a visual language of line, forms, shapes colours and

textures. It is total departure from reality. Total abstraction have no trace of any thing recognizable.

Sanjeeda Khanam has not gone to total abstraction. She has created her compositions taken from the nature. Some natural shapes are identical to the shapes she has used. There is impression of under water life in her paintings. Some coral life is identical to the shapes she has used. The textures give the impression of fossilized objects floating within the order created by the artist. Light and dark shapes create spaces. Within this space some human profiles and birds like shapes look heavier to fly. These hidden images of recognizable objects create curiosity to locate these hidden images.

Her titles called 'Nature on Canvas' includes human, animals, birds, Fish and textures which are incorporated with a spontaneous movement. There is contrast of flat surfaces and textured surfaces which complement each other. The application of colours is soothing and harmonious.



Kalautsav

A group show of paintings was held in the gallery of All India Fine Arts & Crafts Society from 15 to 21 April 2015.

Groups are formed to hold exhibitions and interact with each other and continue their objectives or depends upon their common goal.

Rana Anjum has done her post graduation from Aligarh Muslim University, Aligarh. She has taken the nature and landscape with difference. Huge trees and butterflies make a composition.

Dr. Badar Jahan is Assistant Professor in Fine Arts, Aligarh Muslim University. She painted three wise men symbolizing to convey messages of the wisdom with angel like image behind in the sky.

Dr. Manisha Sharma has done her Ph. D from B R Ambedkar University, Agra. She painted different themes related to the human life. Her painting has three figures which combines to relate very affectionate relation.

Uday Raj have very distinct style of making out line of figures and filling flat colours. Mother and child have an affectionate hug and also some unknown fear. Both combine and create effective composition.

Abdul Kamil has done his M Phill from Aligarh Muslim University, Aligarh. Her cubist shapes create some dimension in the composition. Various tones of shapes create variation. Some mystic atmosphere is created to express required feelings.

Atiya Parveen has done its masters in painting

from Aligarh Muslim University. She expressed the relation between Man and woman. Facing each other with strong communicative gestures. Unish Khan has done his Masters in Painting from Lalit Kala Sansthan, Agra. He has created relation between man and birds. These birds are living with human habitat and a relation is integral part of life.

Pawan Pagal is a self taught Artist, Graphic Designer and a poet. He could capture the serenity of a landscape. His landscapes create vast distances to give feeling of different levels of space.

Ravi Verma has done his graduation in painting from Lalit Kala Sansthan, Agra. He is a painter of mythological subjects. Ganesha is one of them. He has also painted some stone sculpture images from Khajuraho. The light and shade of these works is like artificial light to give dimension to the relief sculpture.

Mohd. Fakhruddin is a self taught artist. creates sculptural objects with modern materials like acrylic sheet or glass. These transparent objects give visibility to see all the dimensions. Technology and creativity has made interesting objects.



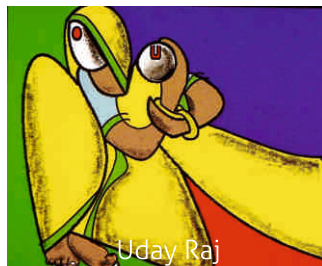
Ravi Verma



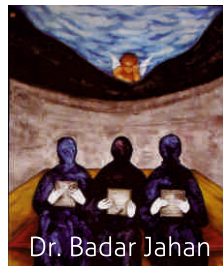
Pawan Pagal



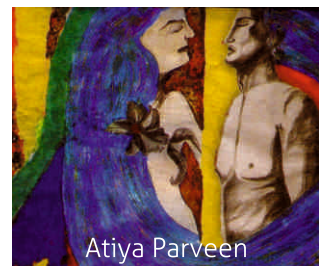
Abdul Kamil



Uday Raj



Dr. Badar Jahan



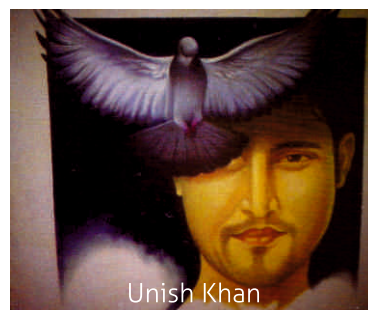
Atiya Parveen



Rana Anjum



Dr. Manisha Sharma



Unish Khan



Mohd. Fakhruddin

Eminent Sculptor Sh. Shiv Singh Passed away on 26th June 2015 at Chandigarh. The President and members of the Society and staff share the loss of the family and of nation. We all pray to the almighty for peaceful journey to the departed soul.



Sculptor SHIV SINGH 1938-2015 by Prem Singh

I met Shiv Singh in 1962 when I joined Government School of Art and Craft, Chandigarh. The School of Art was originally set up in Shimla after the 1947 partition of India under the Department of Industries and Industrial Training, Punjab Government as a successor institution to the Mayo school of Art, Lahore (now in Pakistan) in 1953. Shri Sardari Lal Parasher who was Vice Principal, Mayo School of Art was appointed its first Principal. This was also the time when Punjab was retracing its cultural roots after the massive dislocation of Muslims, Hindus and Sikhs stricken by the violence of the worst kind on both sides of the border took place. The Shimla School shifted to the new Capital of Punjab namely Chandigarh in 1962. Shiv Singh was the then a final year student of Sculpture. Wearing black came naturally for him. A sculptor is more concerned with the liberation of form hidden in wood, stone and metal rather than the spectrum of colour – the lifeline of a painter's imagination. And to add a tinge of happiness to his black he always wore vermillion as under-turban, inners or scarf. It was a sheer pleasure to see him and his classmates modeling in clay, chiseling a piece of wood or shaping a sheet of metal. I was doing a course in Commercial Art. There was a great respect for the academic system which had an overbearing of the British Empire in India. Manet, Monet, Sisley, Pissaro, Van Gogh, Picasso, Matisse, Moore were some of the names held in high esteem and admiration for their revolutionizing the vision of art. Prominent among the Indian names were Amrita Sher-gil, B.C. Sanyal, RoopKrishen, Dhan Raj Bhagat, Har Krishan Lall, Pran Nath Mago, Amar Nath Sehgal, Satish Gujral, Jaswant Singh, Thakur Singh and Sobha Singh.

As the Museum building was under construction at that time so the half of the building of the School of Art was housing the Museum collection of paintings and sculptures by Indian artists of the past and present. It was quite enriching to see the finest miniatures of Pahari, Rajput and Mughal *kalam*, Terracotta Figurines belonging to the Indus Valley Civilisation and Gandhara Sculptures.

Shiv Singh grew with the growth of Chandigarh - a city planned and designed by the famous French architect Mons Le Corbusier and his team of architects in its entirety, envisioned by the first Prime Minister of India Pandit Jawahar Lal Nehru as 'a symbol of Modern India'.

Born on 5 July, 1938 at Bassi Ghulam Husain, district Hoshiarpur, Punjab. Recent archaeological explorations have revealed the antiquity of the city to Indus Valley Civilization. The area is known for its Ivory (now replaced by synthetic alternatives) and wire inlay work and wooden handicrafts. Shiv Singh had that craftsmanship in his blood to sculpt wood & welding and moulding his metal sculptures. He was mainly inspired by the knots in wood that further sharpened his focus to generate force, strength and movement in the making of his sculptures. His skill was further honed in West Germany where he went for an advanced study in sculpture under the German Government Research Grant in 1968 for three years. Being a player of football he could understand the meaning of force, strength and movement thus reinforcing the same by adding the word 'space' to it.

His journey into art began with the shaping / forming of forms in driftwood followed by the chiseling of it. The seed of his art was lying in the knots in wood. This stimulated his imagination and inspired him to create a series of sculptures in wood that earned him appreciation from the discerning eyes like Dr. Mulk Raj Anand, Dr. M.S.Randhawa, Prof B.C.Sanyal, Dhan Raj Bhagat & Dr. B.N.Goswamy. It is only after that he got a research grant for advance study and research in art in Germany for three years. While he was working there his focus was on balance and movement with roots in Nature. And to achieve this in 3D is not easy. The works that he created there in wood and metal were enough to prove him a sculptor of merit. Exposure to European art and its prevalent trends further broadened his thinking and reinforced the artist in him. This was also the time when he met a pretty German girl Gisela. It was love at first sight. She was then associated with Indo-German Friendship Society so she 'had some sort of an idea about India and was already interested in it. They were married in 1972."After our marriage" says Gisela,"we visited his relatives and I kept addressing my husband by his name. When I was told how in India they don't do it, my first reaction was like – then why my mother-in-law did give a name to my husband. If I can't address him by his name" ..Yasvin, their only son, now lives in Frankfurt, Germany.

From the indoor, his sculptures in metal came in the open sun and space with a varying degree scale/dimension to withstand the weather. A few of his sculptures even invite people for interplay with the spaces marked with ascending and descending movement.

His creativity also found expression in painting, drawing, illustration, weaving, mural, terracotta, designing, furniture and toys.

At time his oft-repeated forms and derivations stun the viewers for his stagnancy & similarity with the work of some of the master sculptors of the west. To quote an instance his sculpture at the Lake Club , Chandigarh seems almost a replica of 'Kouros', 1945, by Isamu Noguchi (1904 – 1988) of America. The sculpture is now on display at the Metropolitan Museum of Art, New York.

Shiv Singh's work was extensively shown in solo and group shows in India, Germany, Denmark, France, Sweden, Scotland, Canada and represented in several important national and international expositions. His works are in the permanent collection of National Gallery of Modern Art, New Delhi, Central Lalit Kala Akademi, Government Museum and Art Gallery, Chandigarh, Fine Arts Museum, Punjab University, Chandigarh, Punjabi University Patiala, Punjab Agricultural University, Ludhiana, State Museum, Shimla, Hack Museum, Ludwigshafen, Glaub Art Museum, Koln, Germany besides many public spaces.

Sculptor Shiv Singh who died at the age of 77 on 26 June, was cremated with honours at the Sector 25 crematorium, Chandigarh on Sunday, 28 June, 2015. A large number people, including artists, friends and students who had come from different parts of the region attended the last rites.

"In his passing away", to put in the words of an art historian and author Dr. B.N.Goswamy, " one has lost an artist of imagination and great, untiring, energy.



Sh. Bal Krishan Bhagat, a life member and member of the council of the Society passed away on 25th June 2015 in Delhi. The President and members of the Society and staff share the loss of the family. We all pray to the almighty for peaceful journey to the departed soul.